

STOP CALDERDALE WINDFARM GROUP OF GROUPS PROTECTING AND RESTORING WALSHAW MOOR'S BIODIVERSITY



Do these big drains and eroded peat on Walshaw Moor look like blanket bog re-wetting & restoration?

Biodiversity (the variety of animal and plant life) on the proposed wind farm site on Walshaw Moor Estate is highly protected. In theory.

In practice, Walshaw Moor's biodiversity over the past decade has not been so protected - despite people's best efforts to make the conservation bodies use their powers effectively.

If the wind farm were to go ahead, the resulting drying out of the peat and lowering of the water table could destroy the protected blanket.



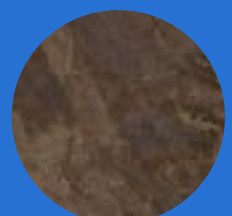
BAN THE BURN AT THE EU

We asked the EU to investigate Natural England's unlawful consent to heather burning on Walshaw Moor



BARE PEAT ON SHACKLETON

Natural England has repeatedly failed to make Walshaw Moor Estate Ltd protect & restore biodiversity



HEATHER HILL BLANKET BOG ON WALSHAW MOOR - ABOUT AS BIODIVERSE AS A MULTI-STORY CARPARK

This satellite photo shows why - rows of drainage ditches near grouse butt 3

1

HOW CAN WE MAKE SURE CONSERVATION BODIES DO A BETTER JOB NOW?

2

WHAT'S GONE WRONG WITH RESTORING WALSHAW MOOR'S BIODIVERSITY?

3

WHAT CAN YOU DO TO HELP?

Biodiversity protection laws are no good unless they're enforced

Calderdale Planning Authority's 'Scoping Reponse' to the wind farm developers says if the wind farm were to go ahead, the resulting drying out of the peat and lowering of the water table could destroy the protected blanket bog habitat.

How can we make sure that the authorities use their biodiversity protection powers effectively, and stop this biodiversity loss from happening?

In the past, Natural England seems to have consented to Walshaw Moor Estate Ltd's activities on Walshaw Moor when it shouldn't have. The only lawful basis for consent is an assessment that activities wouldn't damage the protected site, which Natural England determined was the case in 2012. But Ban the Burn weren't convinced and asked the EU Commission to investigate the apparent unlawfulness of Natural England's consent to burning heather and other vegetation on blanket bog. The RSPB also put in a related complaint.

Long story short: the EU Commission found that the UK Government was in breach of the law by allowing burning of Walshaw Moor and other peatlands to take place. Eventually in 2021 the UK government legislated to prevent the burning of



heather and other vegetation on protected blanket bog habitats (but only >40cm), without a licence.

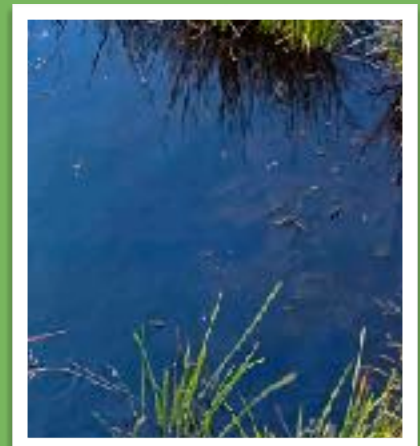
Natural England made another wrong call in a later Assessment, this time that no damage to the moor's protected blanket bog would result from construction of a stone and timber track across it. Overturning Natural England's wrong consent took a legal challenge (in the UK courts), many objections from the public, and a man with a metre rule who measured the actual peat depth along the track and so disproved Walshaw Moor Estate's incorrect estimates.

"Calderdale Planning Authority has to assess whether the proposed windfarm wouldn't damage the protected site. If there's any doubt about it, the Planning Authority then has to stop the proposal from proceeding to the planning application stage. They must make an accurate, lawful decision."

WHAT CAN I DO TO HELP?

WRITE to the Calderdale Planning Officer, Richard Riggs: richard.riggs@calderdale.gov.uk, quoting 23/06010/EIA Calderdale Wind Farm. The developers have to carry out a 'Shadow Habitats Regulations Assessment' of all impacts of the proposed windfarm on the site's biodiversity, hydrology, water quality and peat. So that Calderdale Planning Authority can assess if no scientific doubt remains that the windfarm would not damage the integrity of the protected site. You can tell Calderdale Council how important it is to you that they get this right.

SPREAD THE WORD Our website is www.saverestorewalshawmoor.wordpress.com



Ban the Burn, @StopCalderdaleWindFarm